

Founded in 1982, Awareness Technology[®] has been supplying the international IVD market with high quality bench-top analyzers and reagents for biochemistry, ELISA, CLIA and ISE. Products include semi and fully automatic designs with famous brand names such as StatFax[®], Chromate[®], LuMate[®], ChemWell[®], IONyte[®], and more.

Instruments are manufactured in the USA under both ISO and FDA Quality Systems.

With more than 100,000 instruments in the field, Awareness Technology[®] is ready to supply customers with technical support including applications and service.

Our goal is reliable results at affordable prices.

**DELIVER RESULTS WITH
CONFIDENCESM**

Designed and manufactured in the USA by

AWARENESS TECHNOLOGY, INC.
PO Box 1679,
Palm City, FL 34991 USA

tel. (772) 283 6540
fax (772) 283 8020

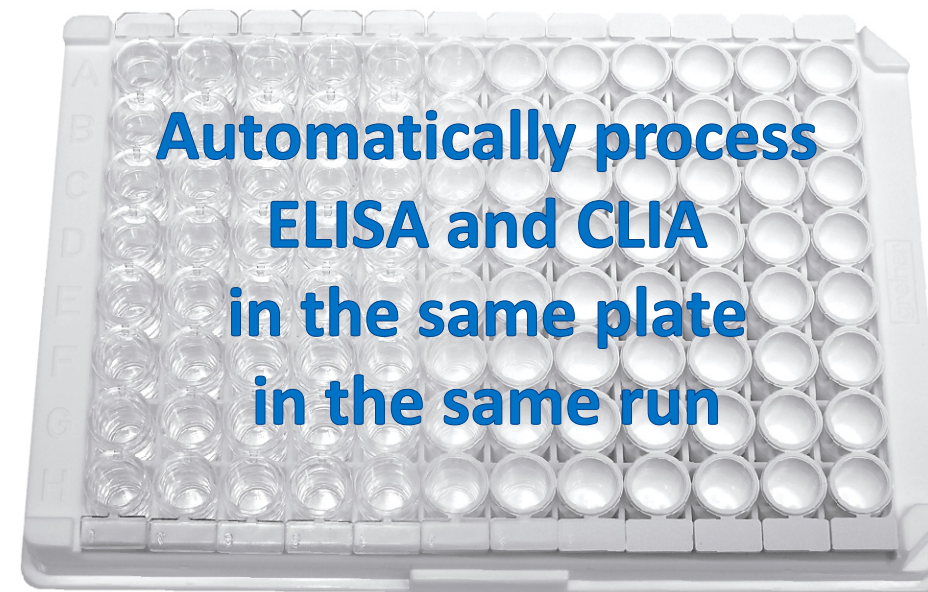
web site: <http://www.awaretech.com>

email: info@awaretech.com

Available worldwide.

For sales information
info@awaretech.com

For technical support
cw-support@awaretech.com



**Automatically process
ELISA and CLIA
in the same plate
in the same run**

**Patented dual-function reader automatically switches
between absorbance and luminescence**





Perform automated ELISA and CLIA simultaneously

USER-PROGRAMMABLE OPEN SYSTEM

Utilize a wide range of glow-luminescent assays and standard colorimetric ELISA tests including hormones, infectious diseases, tumor markers, auto-immune, and more.

SMART SOFTWARE

The software automatically manages each assay separately so that multiple assays can be processed on the same plate even if they have different timings, reagents, and reading modes.



FUSION Technical Features

IMPROVE QUALITY OF CARE

- Easy to operate
- High-precision pipetting
- Software prevents timing conflicts
- Complete QC package

COST EFFECTIVE OPERATION

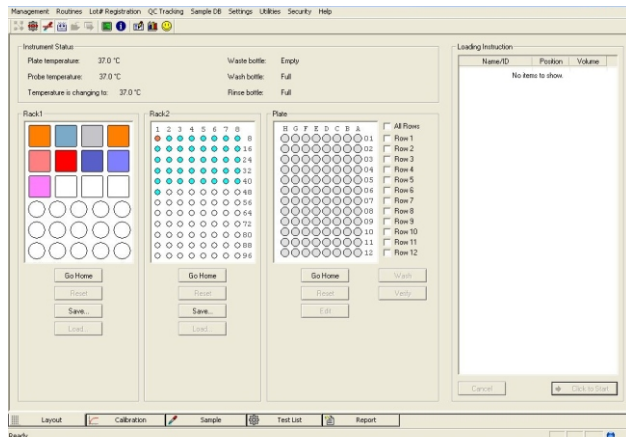
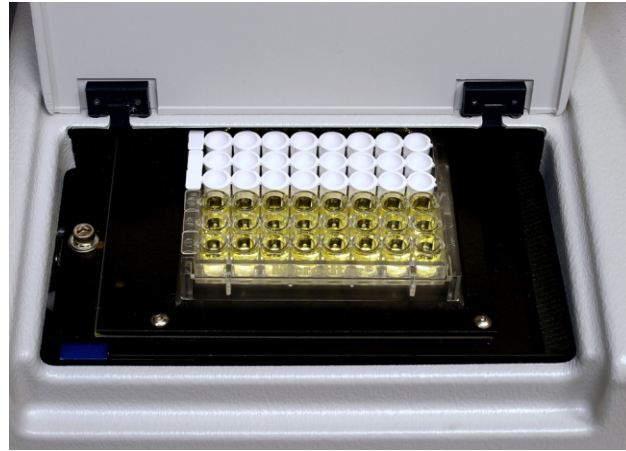
- Use reagents of your choice
- Consolidate two instruments in one
- No proprietary consumables
- Compact footprint saves bench space
- Robust design
- No disposable tips needed

DATA MANAGEMENT

- Password security
- Patient data base software included
- Unlimited number of customized protocols
- LIS integration
- Flexible reporting styles

ROBUST AND RELIABLE

- Self-monitoring of performance
- Simple economical maintenance
- Built in safety features
- Long-life IAD filters
- ISO13485, CE Marked



EASY
RELIABLE
ECONOMICAL

CAPACITY

Samples: removable rack holds 96 serum vials or 12x75mm tubes, pre-dilution on-board
 Reagents: the standard rack holds 27 various size bottles, optional alternate racks available
 Reaction Plate: standard 96-well microplates or strip trays - clear for ELISA and opaque white for Chemiluminescent

OPTICAL PERFORMANCE

Absorbance		Luminescence	
Linear Range:	0.0 to 3.0A	Sensitivity/Detection Limit:	ALP 1×10^{-21} moles HRP 1×10^{-18} moles
Filters:	long-life IAD	Linear range:	to 10^6 RLU
Wavelengths:	405, 450, 492, and 630nm	Cross talk:	Less than 2.5×10^{-4}

LIQUID HANDLING

Volumes: from 2uL to 1.95 mL with precision better than 2%CV, single and multi dispense
 Probe: detects liquid surface, automatic washing and rinsing
 Strip Washer: 8-probe manifold, two wash buffers on board

CALCULATION MODES

Single and multi-calibrator	Curve storage
Linear and point-to-point	Curve editing
Linear and non-regressions	Levy-Jennings plots
Log-logit, cubic spline	Cutoff calculations

PHYSICAL

Dimensions: 86cm W x 51cm L x 40cm H, approx. weight = 35kg
 34" W x 20" L x 16" H, approx. weight = 77 lbs.
 Power: 100 - 250 VAC, 50-60 Hz
 USB port and cable supplied

ChemWell® Fusion is supplied only by qualified, factory-trained distributors.